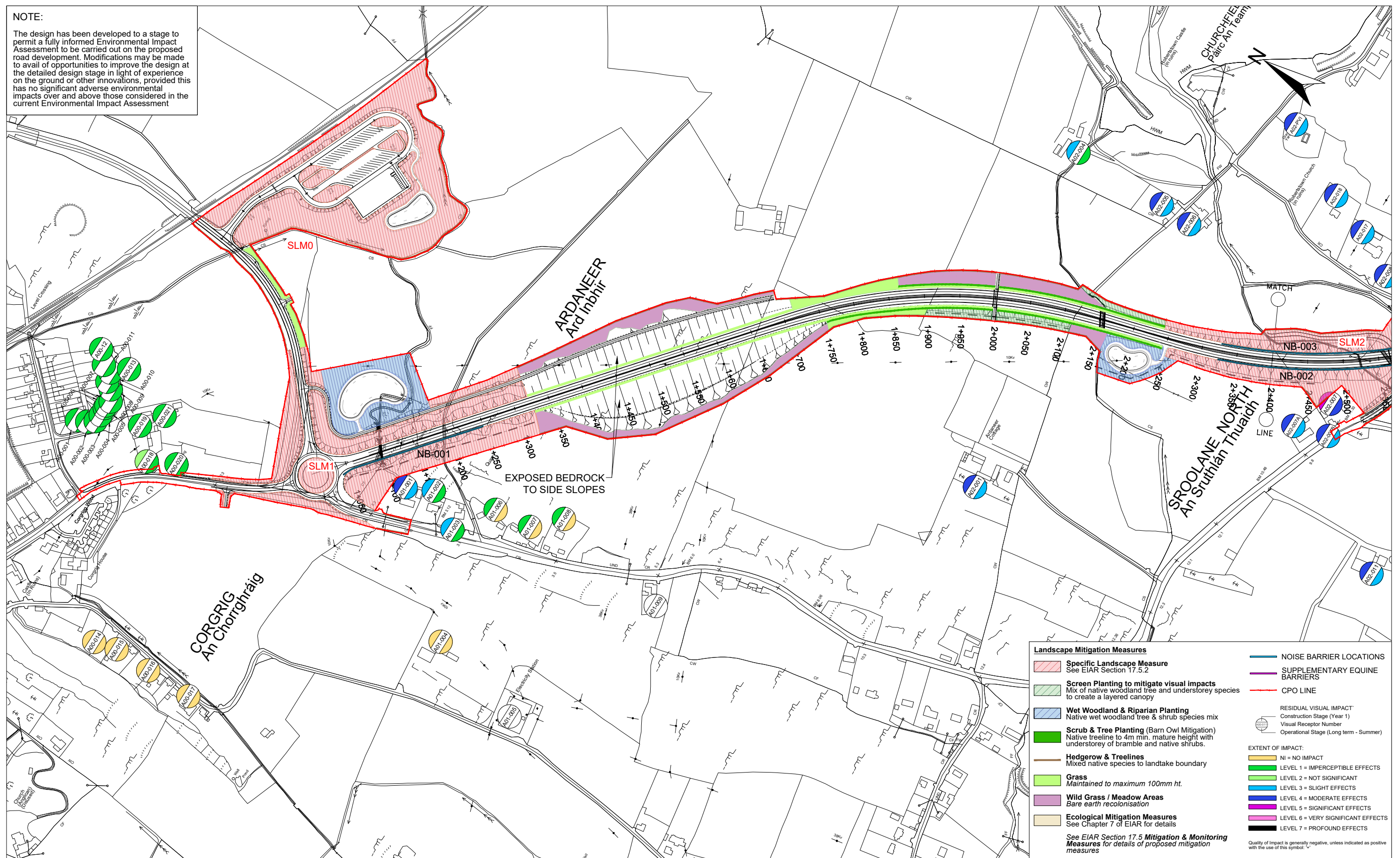


**NOTE:**

The design has been developed to a stage to permit a fully informed Environmental Impact Assessment to be carried out on the proposed road development. Modifications may be made to avail of opportunities to improve the design at the detailed design stage in light of experience on the ground or other innovations, provided this has no significant adverse environmental impacts over and above those considered in the current Environmental Impact Assessment



**Landscape Mitigation Measures**

- Specific Landscape Measure**  
See EIA Section 17.5.2
- Screen Planting to mitigate visual impacts**  
Mix of native woodland tree and understorey species to create a layered canopy
- Wet Woodland & Riparian Planting**  
Native wet woodland tree & shrub species mix
- Scrub & Tree Planting (Barn Owl Mitigation)**  
Native treeline to 4m min. mature height with understorey of bramble and native shrubs.
- Hedgerow & Treelines**  
Mixed native species to landtake boundary
- Grass**  
Maintained to maximum 100mm ht.
- Wild Grass / Meadow Areas**  
Bare earth recolonisation
- Ecological Mitigation Measures**  
See Chapter 7 of EIA for details

See EIA Section 17.5 Mitigation & Monitoring Measures for details of proposed mitigation measures

**NOISE BARRIER LOCATIONS**  
**SUPPLEMENTARY EQUINE BARRIERS**  
**CPO LINE**

**RESIDUAL VISUAL IMPACT**  
Construction Stage (Year 1)  
Visual Receptor Number  
Operational Stage (Long term - Summer)

**EXTENT OF IMPACT:**

- NI = NO IMPACT
- LEVEL 1 = IMPERCEPTIBLE EFFECTS
- LEVEL 2 = NOT SIGNIFICANT
- LEVEL 3 = SLIGHT EFFECTS
- LEVEL 4 = MODERATE EFFECTS
- LEVEL 5 = SIGNIFICANT EFFECTS
- LEVEL 6 = VERY SIGNIFICANT EFFECTS
- LEVEL 7 = PROFOUND EFFECTS

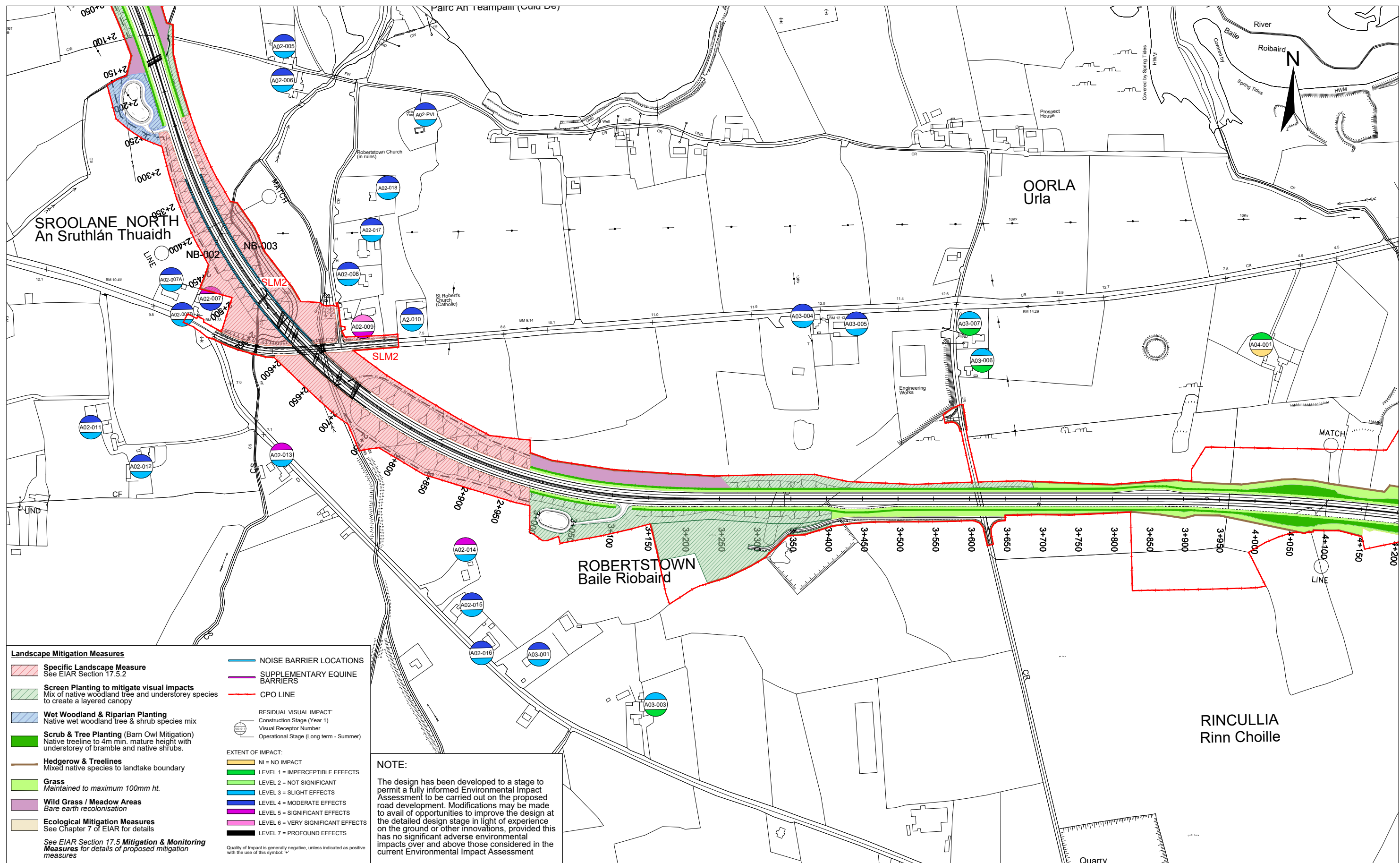
Quality of Impact is generally negative, unless indicated as positive with the use of this symbol: "+"

Ordnance Survey Ireland Licence No. 2019/09/CCMA/Limerick City & County Council  
© Ordnance Survey Ireland and Government of Ireland.

							<p>THE LANDSCAPE - IMPACT RATINGS AND MITIGATION SECTION A SHEET 1 OF 4</p>		
				Arena House, Arena Road, Sandyford, Dublin 18. Tel : +353 (1) 2940800 Fax : +353 (1) 2940820 e-mail : info@rod.ie Website : www.rod.ie www.aecom.com	<b>Environmental Impact Assessment Report</b>		Designed: PM/GR Drawn: LA Checked: GR Approved: SMG	File: Job No: 14.131 Scale: 1:5000 (@ A3) Date: December 2019	Status: E.I.A.R. Drawing No: Fig 11.1 Rev: -

DO NOT SCALE USE FIGURED DIMENSIONS ONLY





**Landscape Mitigation Measures**

- Specific Landscape Measure**  
See EIAR Section 17.5.2
- Screen Planting to mitigate visual impacts**  
Mix of native woodland tree and understorey species to create a layered canopy
- Wet Woodland & Riparian Planting**  
Native wet woodland tree & shrub species mix
- Scrub & Tree Planting (Barn Owl Mitigation)**  
Native treeline to 4m min. mature height with understorey of bramble and native shrubs.
- Hedgerow & Treelines**  
Mixed native species to landtake boundary
- Grass**  
Maintained to maximum 100mm ht.
- Wild Grass / Meadow Areas**  
Bare earth recolonisation
- Ecological Mitigation Measures**  
See Chapter 7 of EIAR for details

See EIAR Section 17.5 Mitigation & Monitoring Measures for details of proposed mitigation measures

**NOISE BARRIER LOCATIONS**

**SUPPLEMENTARY EQUINE BARRIERS**

**CPO LINE**

**RESIDUAL VISUAL IMPACT**  
Construction Stage (Year 1)  
Visual Receptor Number  
Operational Stage (Long term - Summer)

**EXTENT OF IMPACT:**

- NI = NO IMPACT
- LEVEL 1 = IMPERCEPTIBLE EFFECTS
- LEVEL 2 = NOT SIGNIFICANT
- LEVEL 3 = SLIGHT EFFECTS
- LEVEL 4 = MODERATE EFFECTS
- LEVEL 5 = SIGNIFICANT EFFECTS
- LEVEL 6 = VERY SIGNIFICANT EFFECTS
- LEVEL 7 = PROFOUND EFFECTS

Quality of Impact is generally negative, unless indicated as positive with the use of this symbol: +

**NOTE:**

The design has been developed to a stage to permit a fully informed Environmental Impact Assessment to be carried out on the proposed road development. Modifications may be made to avail of opportunities to improve the design at the detailed design stage in light of experience on the ground or other innovations, provided this has no significant adverse environmental impacts over and above those considered in the current Environmental Impact Assessment

Ordnance Survey Ireland Licence No Licence No. 2019/09/CCMA/Limerick City & County Council.  
© Ordnance Survey Ireland and Government of Ireland.



**Roughan & O'Donovan-AECOM Alliance**

**PRODAECOM**

Arena House, Arena Road,  
Sandyford, Dublin 18.  
Tel : +353 (1) 2940800  
Fax : +353 (1) 2940820  
e-mail : info@rod.ie  
Website : www.rod.ie  
www.aecom.com

Project

**Foynes to Limerick Road (including Adare Bypass)**

**Environmental Impact Assessment Report**

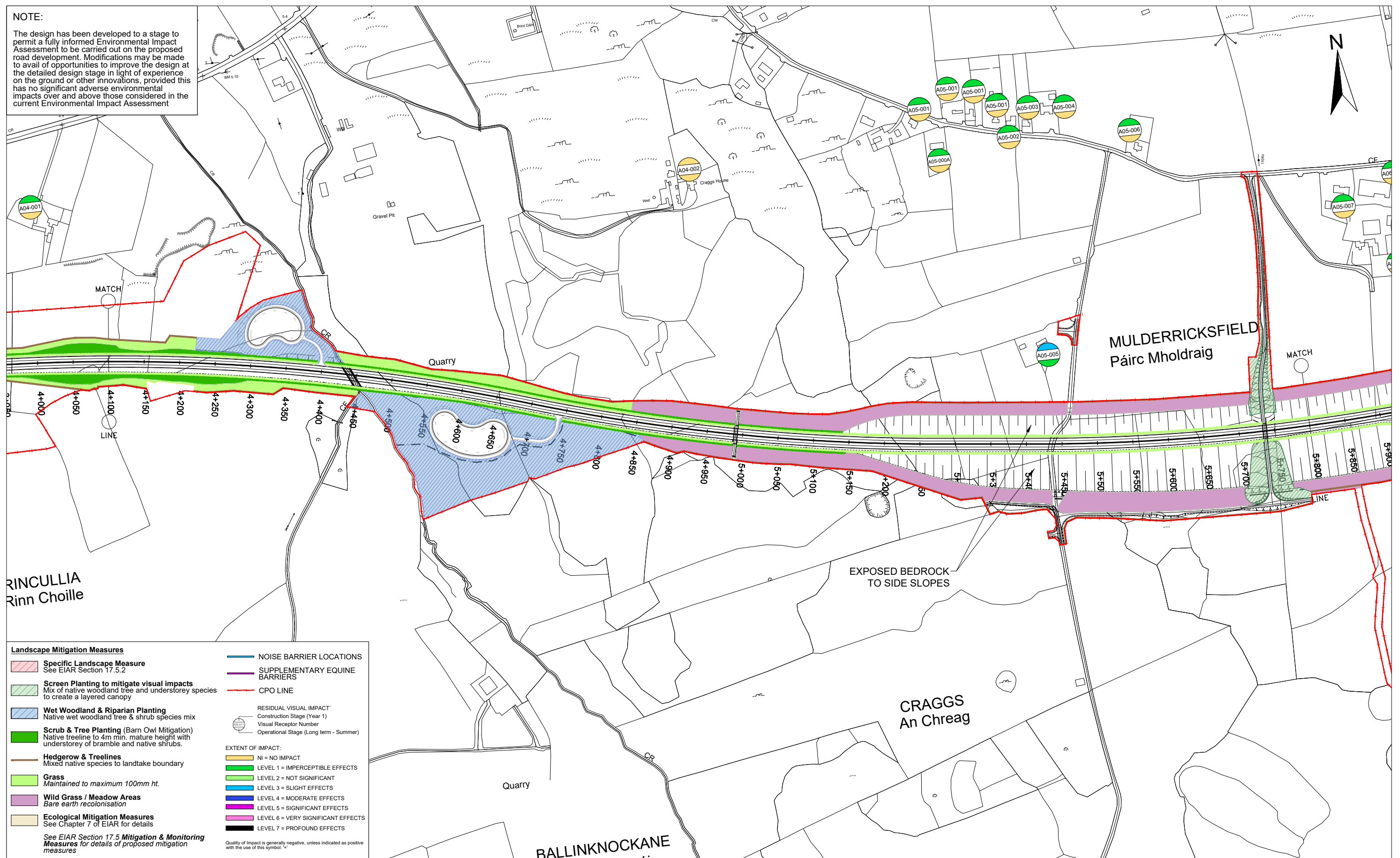
Drawing Title:  
**THE LANDSCAPE - IMPACT RATINGS AND MITIGATION SECTION A SHEET 2 OF 4**

Designed: PM/GR	File:	Status: E.I.A.R.
Drawn: LA	Job No: 14.131	
Checked: GR	Scale: 1:5000 (@ A3)	Drawing No: Fig 11.2
Approved: SMG	Date: December 2019	Rev: -

DO NOT SCALE USE FIGURED DIMENSIONS ONLY

**NOTE:**

The design has been developed to a stage to permit a fully informed Environmental Impact Assessment to be carried out on the proposed road development. Modifications may be made to avail of opportunities to improve the design at the detailed design stage in light of experience on the ground or other innovations, provided this has no significant adverse environmental impacts over and above those considered in the current Environmental Impact Assessment



**Landscape Mitigation Measures**

- Specific Landscape Measure**  
See E.I.A.R Section 17.5.2
- Screen Planting to mitigate visual impacts**  
Mix of native woodland tree and understorey species to create a layered canopy
- Wet Woodland & Riparian Planting**  
Native wet woodland tree & shrub species mix
- Scrub & Tree Planting (Barn Owl Mitigation)**  
Native treeline to 4m min. mature height with understorey of bramble and native shrubs.
- Hedgerow & Treelines**  
Mixed native species to landtake boundary
- Grass**  
Maintained to maximum 100mm ht.
- Wild Grass / Meadow Areas**  
Bare earth recolonisation
- Ecological Mitigation Measures**  
See Chapter 7 of E.I.A.R for details

See E.I.A.R Section 17.5 Mitigation & Monitoring Measures for details of proposed mitigation measures

**NOISE BARRIER LOCATIONS**

**SUPPLEMENTARY EQUINE BARRIERS**

**CPO LINE**

**RESIDUAL VISUAL IMPACT**  
Construction Stage (Year 1)  
Visual Receptor Number  
Operational Stage (Long term - Summer)

**EXTENT OF IMPACT:**

- NI = NO IMPACT
- LEVEL 1 = IMPERCEPTIBLE EFFECTS
- LEVEL 2 = NOT SIGNIFICANT
- LEVEL 3 = SLIGHT EFFECTS
- LEVEL 4 = MODERATE EFFECTS
- LEVEL 5 = SIGNIFICANT EFFECTS
- LEVEL 6 = VERY SIGNIFICANT EFFECTS
- LEVEL 7 = PROFOUND EFFECTS

Quality of Impact is generally negative, unless indicated as positive with the use of this symbol: +

Ordnance Survey Ireland Licence No Licence No. 2019/09/CCMA/Limerick City & County Council  
© Ordnance Survey Ireland and Government of Ireland.



**Roughan & O'Donovan-AECOM Alliance**

**ROD AECOM**

Arena House, Arena Road,  
Sandyford, Dublin 18.  
Tel : +353 (1) 2940800  
Fax : +353 (1) 2940820  
e-mail : info@rod.ie  
Website : www.rod.ie  
www.aecom.com

Project

**Foynes to Limerick Road (including Adare Bypass)**

**Environmental Impact Assessment Report**

Drawing Title:  
**THE LANDSCAPE - IMPACT RATINGS AND MITIGATION SECTION A SHEET 3 OF 4**

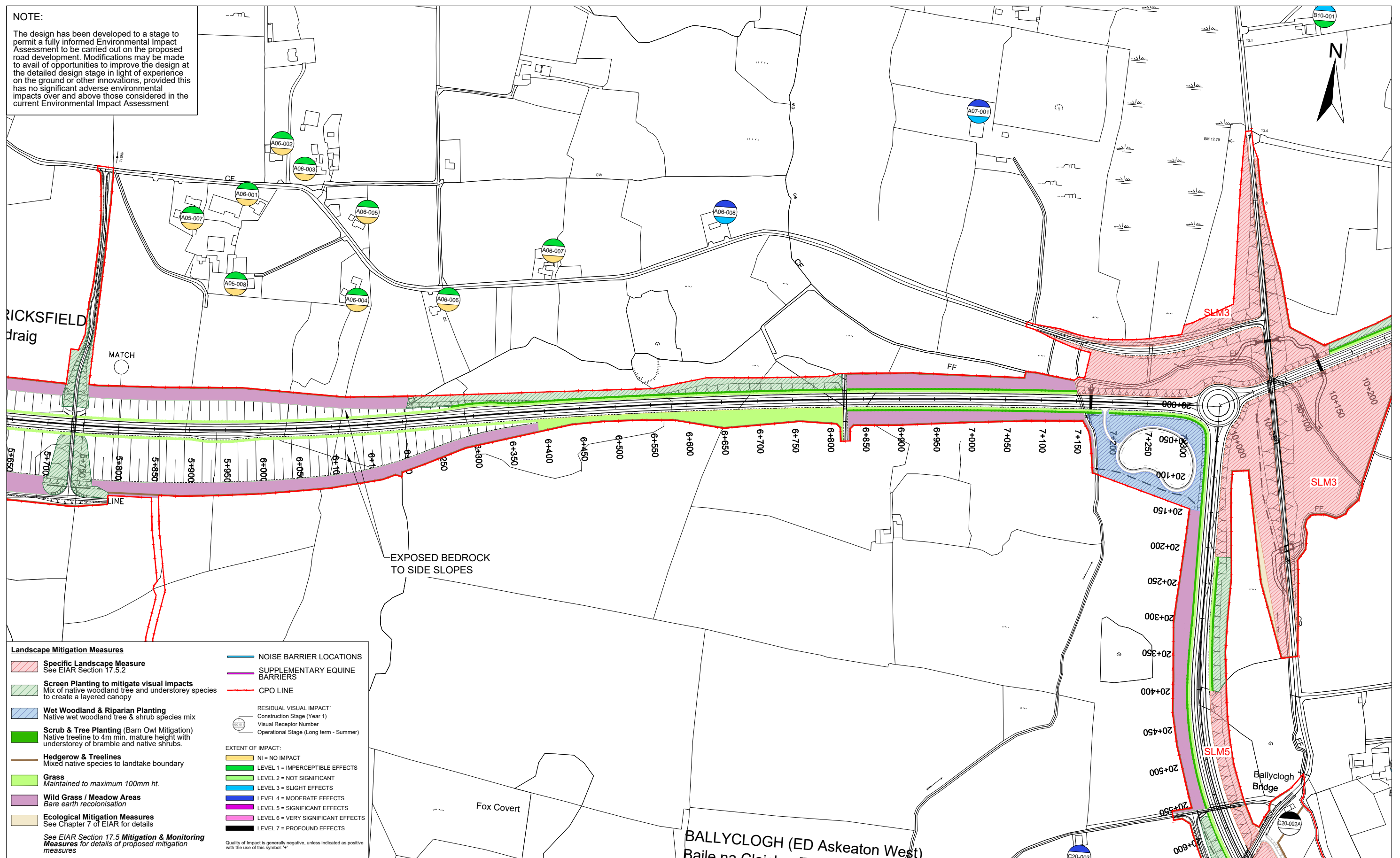
Designed: PM/GR	File:	Status: E.I.A.R.
Drawn: LA	Job No: 14.131	
Checked: GR	Scale: 1:5000 (@ A3)	Drawing No: Fig 11.3
Approved: SMG	Date: December 2019	Rev: -

DO NOT SCALE USE FIGURED DIMENSIONS ONLY



**NOTE:**

The design has been developed to a stage to permit a fully informed Environmental Impact Assessment to be carried out on the proposed road development. Modifications may be made to avail of opportunities to improve the design at the detailed design stage in light of experience on the ground or other innovations, provided this has no significant adverse environmental impacts over and above those considered in the current Environmental Impact Assessment



**Landscape Mitigation Measures**

- Specific Landscape Measure**  
See EIAR Section 17.5.2
- Screen Planting to mitigate visual impacts**  
Mix of native woodland tree and understorey species to create a layered canopy
- Wet Woodland & Riparian Planting**  
Native wet woodland tree & shrub species mix
- Scrub & Tree Planting (Barn Owl Mitigation)**  
Native treeline to 4m min. mature height with understorey of bramble and native shrubs.
- Hedgerow & Treelines**  
Mixed native species to landtake boundary
- Grass**  
Maintained to maximum 100mm ht.
- Wild Grass / Meadow Areas**  
Bare earth recolonisation
- Ecological Mitigation Measures**  
See Chapter 7 of EIAR for details

See EIAR Section 17.5 Mitigation & Monitoring Measures for details of proposed mitigation measures

**NOISE BARRIER LOCATIONS**

**SUPPLEMENTARY EQUINE BARRIERS**

**CPO LINE**

**RESIDUAL VISUAL IMPACT**  
Construction Stage (Year 1)  
Visual Receptor Number  
Operational Stage (Long term - Summer)

**EXTENT OF IMPACT:**

- NI = NO IMPACT
- LEVEL 1 = IMPERCEPTIBLE EFFECTS
- LEVEL 2 = NOT SIGNIFICANT
- LEVEL 3 = SLIGHT EFFECTS
- LEVEL 4 = MODERATE EFFECTS
- LEVEL 5 = SIGNIFICANT EFFECTS
- LEVEL 6 = VERY SIGNIFICANT EFFECTS
- LEVEL 7 = PROFOUND EFFECTS

Quality of Impact is generally negative, unless indicated as positive with the use of this symbol: +



**Roughan & O'Donovan-AECOM Alliance**

**ROD AECOM**

Arena House, Arena Road,  
Sandyford, Dublin 18.  
Tel : +353 (1) 2940800  
Fax : +353 (1) 2940820  
e-mail : info@rod.ie  
Website : www.rod.ie  
www.aecom.com

Project

**Foynes to Limerick Road (including Adare Bypass)**

**Environmental Impact Assessment Report**

Drawing Title:  
**THE LANDSCAPE - IMPACT RATINGS AND MITIGATION SECTION A SHEET 4 OF 4**

Designed: PM/GR	File:	Status: E.I.A.R.
Drawn: LA	Job No: 14.131	
Checked: GR	Scale: 1:5000 (@ A3)	Drawing No: Fig 11.4
Approved: SMG	Date: December 2019	Rev: -

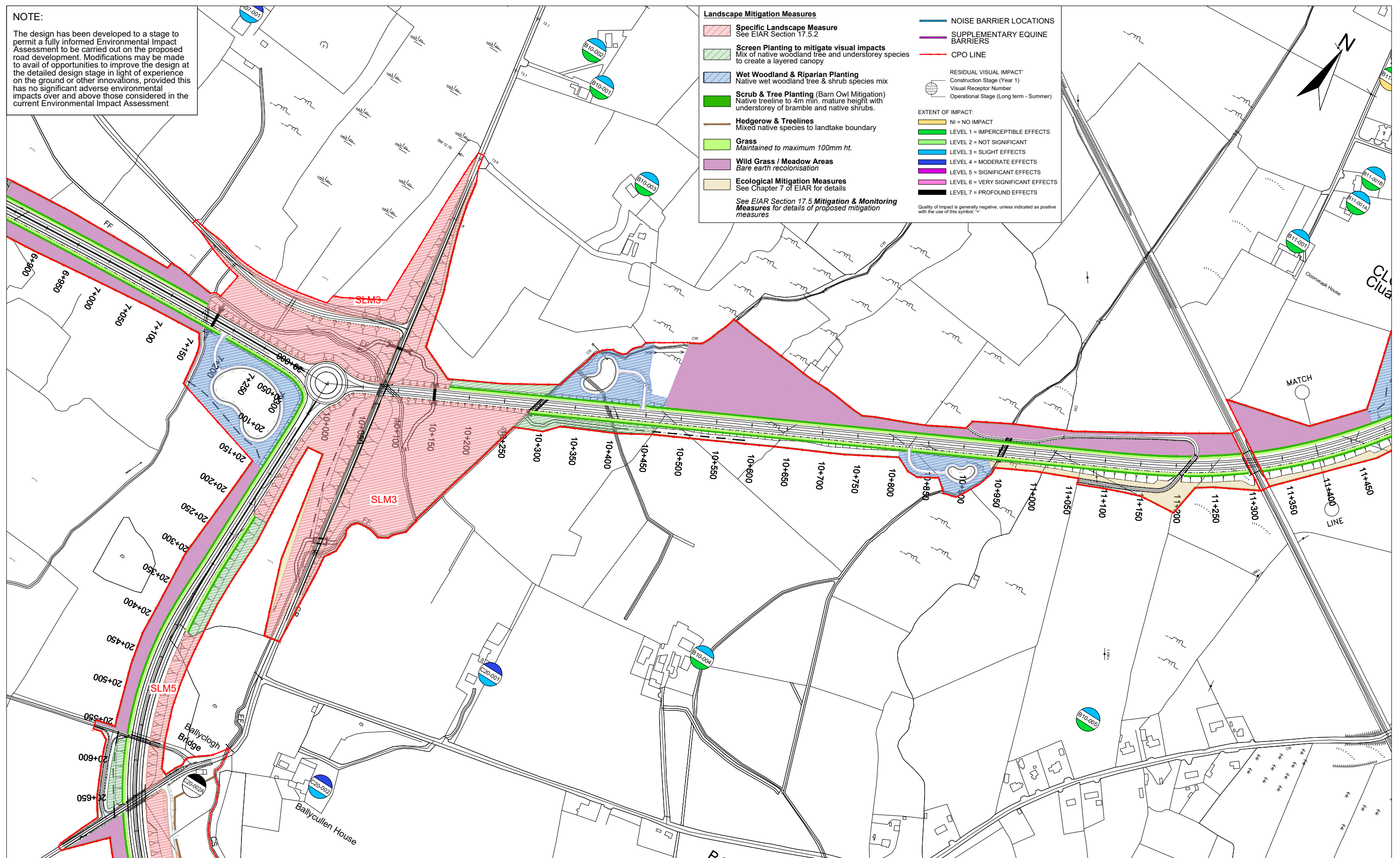
Ordnance Survey Ireland Licence No Licence No. 2019/09/CCMA/Limerick City & County Council.  
© Ordnance Survey Ireland and Government of Ireland.

DO NOT SCALE USE FIGURED DIMENSIONS ONLY



**NOTE:**

The design has been developed to a stage to permit a fully informed Environmental Impact Assessment to be carried out on the proposed road development. Modifications may be made to avail of opportunities to improve the design at the detailed design stage in light of experience on the ground or other innovations, provided this has no significant adverse environmental impacts over and above those considered in the current Environmental Impact Assessment



**Landscape Mitigation Measures**

- Specific Landscape Measure**  
See EIAR Section 17.5.2
- Screen Planting to mitigate visual impacts**  
Mix of native woodland tree and understorey species to create a layered canopy
- Wet Woodland & Riparian Planting**  
Native wet woodland tree & shrub species mix
- Scrub & Tree Planting (Barn Owl Mitigation)**  
Native treeline to 4m min. mature height with understorey of bramble and native shrubs.
- Hedgerow & Treelines**  
Mixed native species to landlake boundary
- Grass**  
Maintained to maximum 100mm ht.
- Wild Grass / Meadow Areas**  
Bare earth recolonisation
- Ecological Mitigation Measures**  
See Chapter 7 of EIAR for details

See EIAR Section 17.5 Mitigation & Monitoring Measures for details of proposed mitigation measures

**NOISE BARRIER LOCATIONS**

**SUPPLEMENTARY EQUINE BARRIERS**

**CPO LINE**

**RESIDUAL VISUAL IMPACT**  
Construction Stage (Year 1)  
Visual Receptor Number  
Operational Stage (Long term - Summer)

**EXTENT OF IMPACT:**

- NI = NO IMPACT
- LEVEL 1 = IMPERCEPTIBLE EFFECTS
- LEVEL 2 = NOT SIGNIFICANT
- LEVEL 3 = SLIGHT EFFECTS
- LEVEL 4 = MODERATE EFFECTS
- LEVEL 5 = SIGNIFICANT EFFECTS
- LEVEL 6 = VERY SIGNIFICANT EFFECTS
- LEVEL 7 = PROFOUND EFFECTS

Quality of impact is generally negative, unless indicated as positive with the use of this symbol: '+'

Ordnance Survey Ireland Licence No. 2019/09/CCMA/Limerick City & County Council  
© Ordnance Survey Ireland and Government of Ireland

<p>Tionscaldal Éireann Project Ireland 2040</p>	<p>An Roinn Iompair Turasoireachta agus Spóirt Department of Transport, Tourism and Sport</p>	<p>TIIV Bonneagar Iompair Éireann Transport Infrastructure Ireland</p>	<p>Comhairle Cathrach &amp; Contae Luimnigh Limerick City &amp; County Council</p>	<p>Roughan &amp; O'Donovan-AECOM Alliance</p> <p>Arena House, Arena Road, Sandyford, Dublin 18. Tel : +353 (1) 2940800 Fax : +353 (1) 2940820 e-mail : info@rod.ie Website : www.rod.ie www.aecom.com</p>	<p>Project</p> <p><b>Foynes to Limerick Road (including Adare Bypass)</b></p> <p><b>Environmental Impact Assessment Report</b></p>	<p>Drawing Title: <b>THE LANDSCAPE - IMPACT RATINGS AND MITIGATION SECTION B SHEET 1 OF 2</b></p>			
						<p>Designed: PM/GR</p> <p>Drawn: LA</p> <p>Checked: GR</p> <p>Approved: SMG</p>	<p>File:</p> <p>Job No: 14.131</p> <p>Scale: 1:5000 (@ A3)</p> <p>Date: December 2019</p>	<p>Status: E.I.A.R.</p> <p>Drawing No: Fig 11.5</p> <p>Rev: -</p>	<p>DO NOT SCALE USE FIGURED DIMENSIONS ONLY</p>

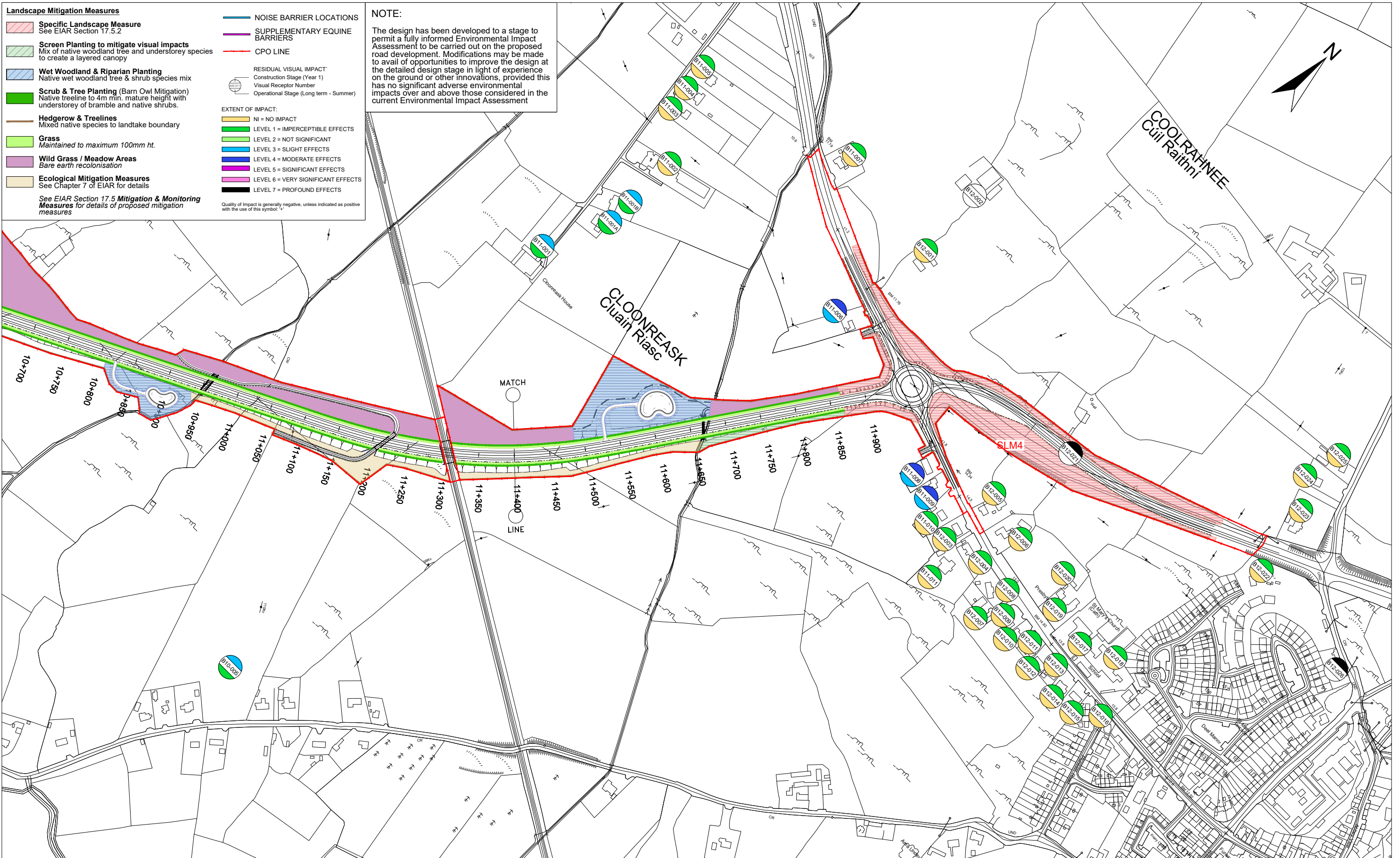


- Landscape Mitigation Measures**
- Specific Landscape Measure**  
See EIAR Section 17.5.2
  - Screen Planting to mitigate visual impacts**  
Mix of native woodland tree and understory species to create a layered canopy
  - Wet Woodland & Riparian Planting**  
Native wet woodland tree & shrub species mix
  - Scrub & Tree Planting (Barn Owl Mitigation)**  
Native treeline to 4m min. mature height with understory of bramble and native shrubs.
  - Hedgerow & Treelines**  
Mixed native species to landtake boundary
  - Grass**  
Maintained to maximum 100mm ht.
  - Wild Grass / Meadow Areas**  
Bare earth recolonisation
  - Ecological Mitigation Measures**  
See Chapter 7 of EIAR for details
- See EIAR Section 17.5 Mitigation & Monitoring Measures for details of proposed mitigation measures

- NOISE BARRIER LOCATIONS
  - SUPPLEMENTARY EQUINE BARRIERS
  - CPO LINE
- RESIDUAL VISUAL IMPACT
- Construction Stage (Year 1)
  - Operational Stage (Long term - Summer)
- EXTENT OF IMPACT:
- NI = NO IMPACT
  - LEVEL 1 = IMPERCEPTIBLE EFFECTS
  - LEVEL 2 = NOT SIGNIFICANT
  - LEVEL 3 = SLIGHT EFFECTS
  - LEVEL 4 = MODERATE EFFECTS
  - LEVEL 5 = SIGNIFICANT EFFECTS
  - LEVEL 6 = VERY SIGNIFICANT EFFECTS
  - LEVEL 7 = PROFOUND EFFECTS
- Quality of impact is generally negative, unless indicated as positive with the use of this symbol.

**NOTE:**

The design has been developed to a stage to permit a fully informed Environmental Impact Assessment to be carried out on the proposed road development. Modifications may be made to avail of opportunities to improve the design at the detailed design stage in light of experience on the ground or other innovations, provided this has no significant adverse environmental impacts over and above those considered in the current Environmental Impact Assessment



Ordnance Survey Ireland Licence No. 2019/09/CCMA/Limerick City & County Council  
© Ordnance Survey Ireland and Government of Ireland



**Roughan & O'Donovan-AECOM Alliance**

**ROD AECOM**

Arena House, Arena Road, Sandyford, Dublin 18.  
Tel : +353 (1) 2940800  
Fax : +353 (1) 2940820  
e-mail : info@rod.ie  
Website : www.rod.ie  
www.aecom.com

Project

**Foynes to Limerick Road (including Adare Bypass)**

**Environmental Impact Assessment Report**

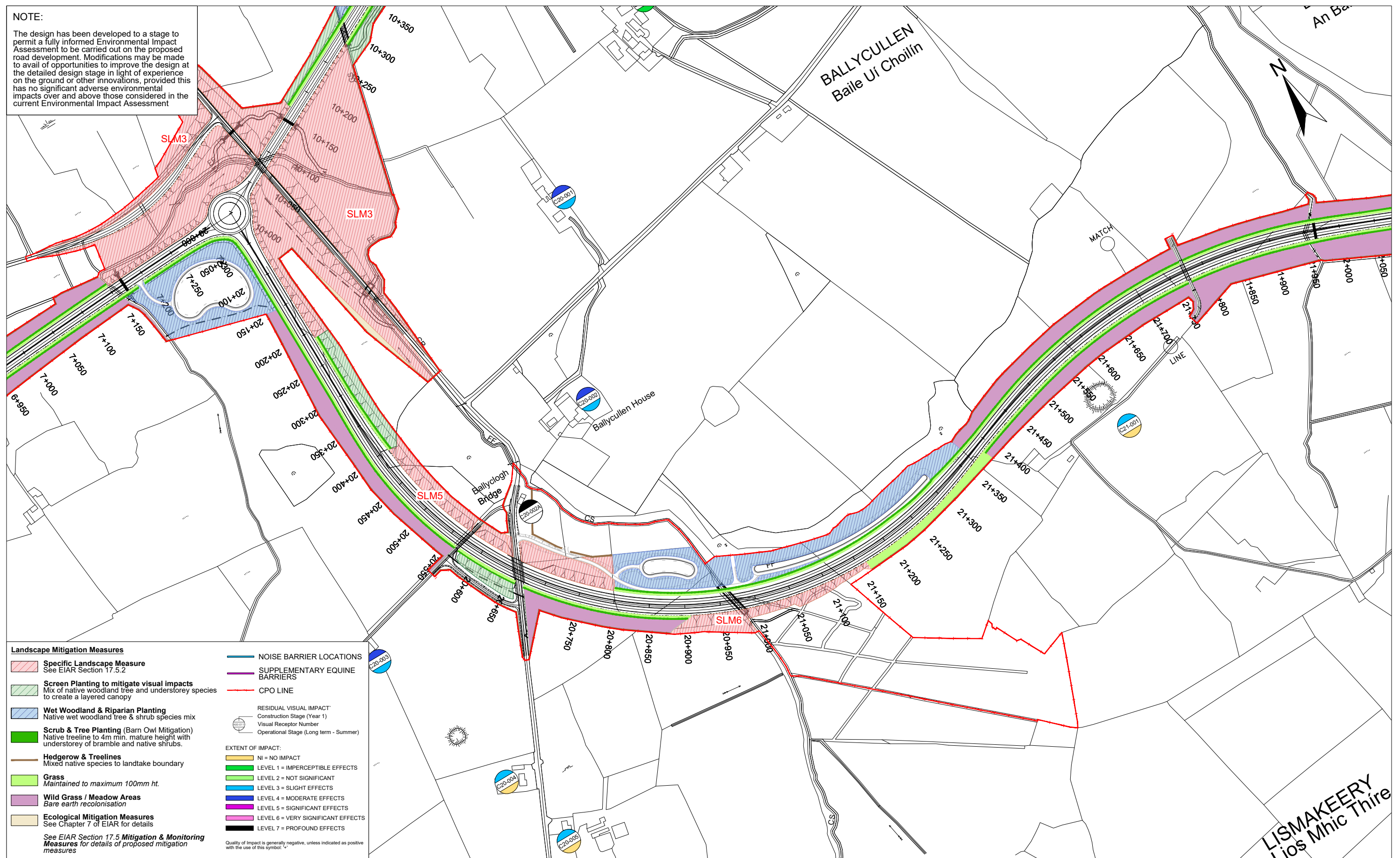
Drawing Title: <b>THE LANDSCAPE - IMPACT RATINGS AND MITIGATION SECTION B SHEET 2 OF 2</b>			
Designed: PM/GR	File:	Status: E.I.A.R.	
Drawn: LA	Job No: 14.131		
Checked: GR	Scale: 1:5000 (@ A3)	Drawing No: Fig 11.6	Rev: -
Approved: SMG	Date: December 2019		

DO NOT SCALE USE FIGURED DIMENSIONS ONLY



**NOTE:**

The design has been developed to a stage to permit a fully informed Environmental Impact Assessment to be carried out on the proposed road development. Modifications may be made to avail of opportunities to improve the design at the detailed design stage in light of experience on the ground or other innovations, provided this has no significant adverse environmental impacts over and above those considered in the current Environmental Impact Assessment



**Landscape Mitigation Measures**

- Specific Landscape Measure**  
See E.I.A.R Section 17.5.2
  - Screen Planting to mitigate visual impacts**  
Mix of native woodland tree and understorey species to create a layered canopy
  - Wet Woodland & Riparian Planting**  
Native wet woodland tree & shrub species mix
  - Scrub & Tree Planting (Barn Owl Mitigation)**  
Native treeline to 4m min. mature height with understorey of bramble and native shrubs.
  - Hedgerow & Treelines**  
Mixed native species to landtake boundary
  - Grass**  
Maintained to maximum 100mm ht.
  - Wild Grass / Meadow Areas**  
Bare earth recolonisation
  - Ecological Mitigation Measures**  
See Chapter 7 of E.I.A.R for details
- See E.I.A.R Section 17.5 Mitigation & Monitoring Measures for details of proposed mitigation measures
- NOISE BARRIER LOCATIONS
  - SUPPLEMENTARY EQUINE BARRIERS
  - CPO LINE
- RESIDUAL VISUAL IMPACT  
Construction Stage (Year 1)  
Visual Receptor Number  
Operational Stage (Long term - Summer)
- EXTENT OF IMPACT:
- NI = NO IMPACT
  - LEVEL 1 = IMPERCEPTIBLE EFFECTS
  - LEVEL 2 = NOT SIGNIFICANT
  - LEVEL 3 = SLIGHT EFFECTS
  - LEVEL 4 = MODERATE EFFECTS
  - LEVEL 5 = SIGNIFICANT EFFECTS
  - LEVEL 6 = VERY SIGNIFICANT EFFECTS
  - LEVEL 7 = PROFOUND EFFECTS
- Quality of Impact is generally negative, unless indicated as positive with the use of this symbol: +

Ordnance Survey Ireland Licence No. Licence No. 2019/09/CCMA/Limerick City & County Council.  
© Ordnance Survey Ireland and Government of Ireland.

	<p>Department of Transport, Tourism and Sport</p>	<p>Bonneagar Iompair Éireann Transport Infrastructure Ireland</p>	<p>Limerick City &amp; County Council</p>	<p>Arena House, Arena Road, Sandyford, Dublin 18. Tel : +353 (1) 2940800 Fax : +353 (1) 2940820 e-mail : info@rod.ie Website : www.rod.ie www.aecom.com</p>	<p>Project</p> <p><b>Foynes to Limerick Road (including Adare Bypass)</b></p> <p><b>Environmental Impact Assessment Report</b></p>	<p>Drawing Title:</p> <p><b>THE LANDSCAPE - IMPACT RATINGS AND MITIGATION SECTION C SHEET 1 OF 6</b></p> <table border="1" style="width: 100%; border-collapse: collapse;"> <tr> <td>Designed: PM/GR</td> <td>File:</td> <td>Status: E.I.A.R.</td> </tr> <tr> <td>Drawn: LA</td> <td>Job No: 14.131</td> <td></td> </tr> <tr> <td>Checked: GR</td> <td>Scale: 1:5000 (@ A3)</td> <td>Drawing No: Fig 11.7</td> </tr> <tr> <td>Approved: SMG</td> <td>Date: December 2019</td> <td>Rev: -</td> </tr> </table>	Designed: PM/GR	File:	Status: E.I.A.R.	Drawn: LA	Job No: 14.131		Checked: GR	Scale: 1:5000 (@ A3)	Drawing No: Fig 11.7	Approved: SMG	Date: December 2019	Rev: -
Designed: PM/GR	File:	Status: E.I.A.R.																
Drawn: LA	Job No: 14.131																	
Checked: GR	Scale: 1:5000 (@ A3)	Drawing No: Fig 11.7																
Approved: SMG	Date: December 2019	Rev: -																

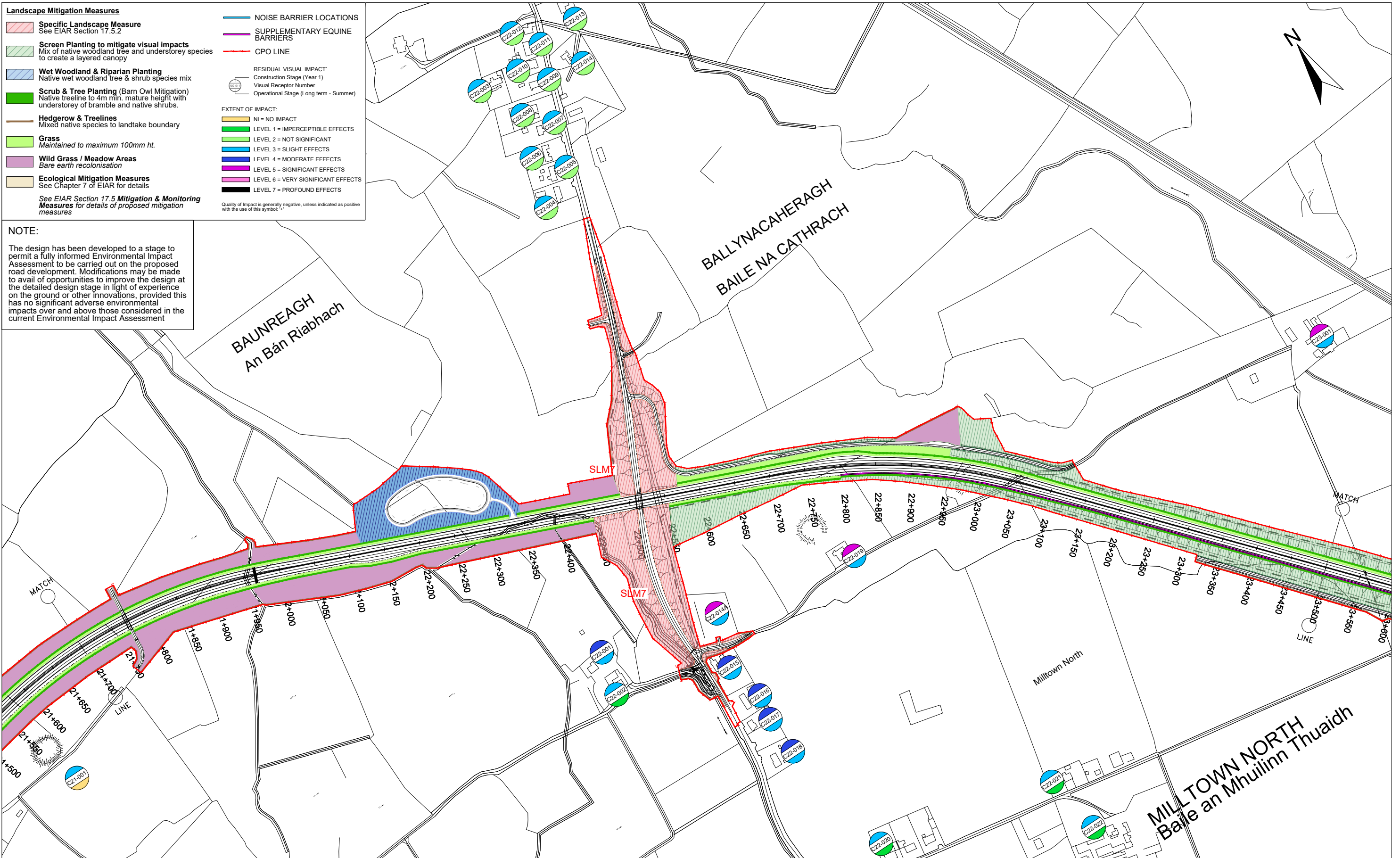
DO NOT SCALE USE FIGURED DIMENSIONS ONLY



- Landscape Mitigation Measures**
- Specific Landscape Measure**  
See E.I.A.R Section 17.5.2
  - Screen Planting to mitigate visual impacts**  
Mix of native woodland tree and understory species to create a layered canopy
  - Wet Woodland & Riparian Planting**  
Native wet woodland tree & shrub species mix
  - Scrub & Tree Planting (Barn Owl Mitigation)**  
Native treeline to 4m min. mature height with understory of bramble and native shrubs.
  - Hedgerow & Treelines**  
Mixed native species to landtake boundary
  - Grass**  
Maintained to maximum 100mm ht.
  - Wild Grass / Meadow Areas**  
Bare earth recolonisation
  - Ecological Mitigation Measures**  
See Chapter 7 of E.I.A.R for details
- See E.I.A.R Section 17.5 Mitigation & Monitoring Measures for details of proposed mitigation measures
- NOISE BARRIER LOCATIONS
  - SUPPLEMENTARY EQUINE BARRIERS
  - CPO LINE
- RESIDUAL VISUAL IMPACT  
Construction Stage (Year 1)  
Visual Receptor Number  
Operational Stage (Long term - Summer)
- EXTENT OF IMPACT:  
 NI = NO IMPACT  
 LEVEL 1 = IMPERCEPTIBLE EFFECTS  
 LEVEL 2 = NOT SIGNIFICANT  
 LEVEL 3 = SLIGHT EFFECTS  
 LEVEL 4 = MODERATE EFFECTS  
 LEVEL 5 = SIGNIFICANT EFFECTS  
 LEVEL 6 = VERY SIGNIFICANT EFFECTS  
 LEVEL 7 = PROFOUND EFFECTS
- Quality of impact is generally negative, unless indicated as positive with the use of this symbol.

**NOTE:**

The design has been developed to a stage to permit a fully informed Environmental Impact Assessment to be carried out on the proposed road development. Modifications may be made to avail of opportunities to improve the design at the detailed design stage in light of experience on the ground or other innovations, provided this has no significant adverse environmental impacts over and above those considered in the current Environmental Impact Assessment



Ordnance Survey Ireland Licence No Licence No. 2019/09/CCMA/Limerick City & County Council.  
© Ordnance Survey Ireland and Government of Ireland.



Roughan & O'Donovan-AECOM Alliance

Arena House, Arena Road,  
Sandyford, Dublin 18.  
Tel : +353 (1) 2940800  
Fax : +353 (1) 2940820  
e-mail : info@rod.ie  
Website : www.rod.ie  
www.aecom.com

Project

**Foynes to Limerick Road (including Adare Bypass)**

**Environmental Impact Assessment Report**

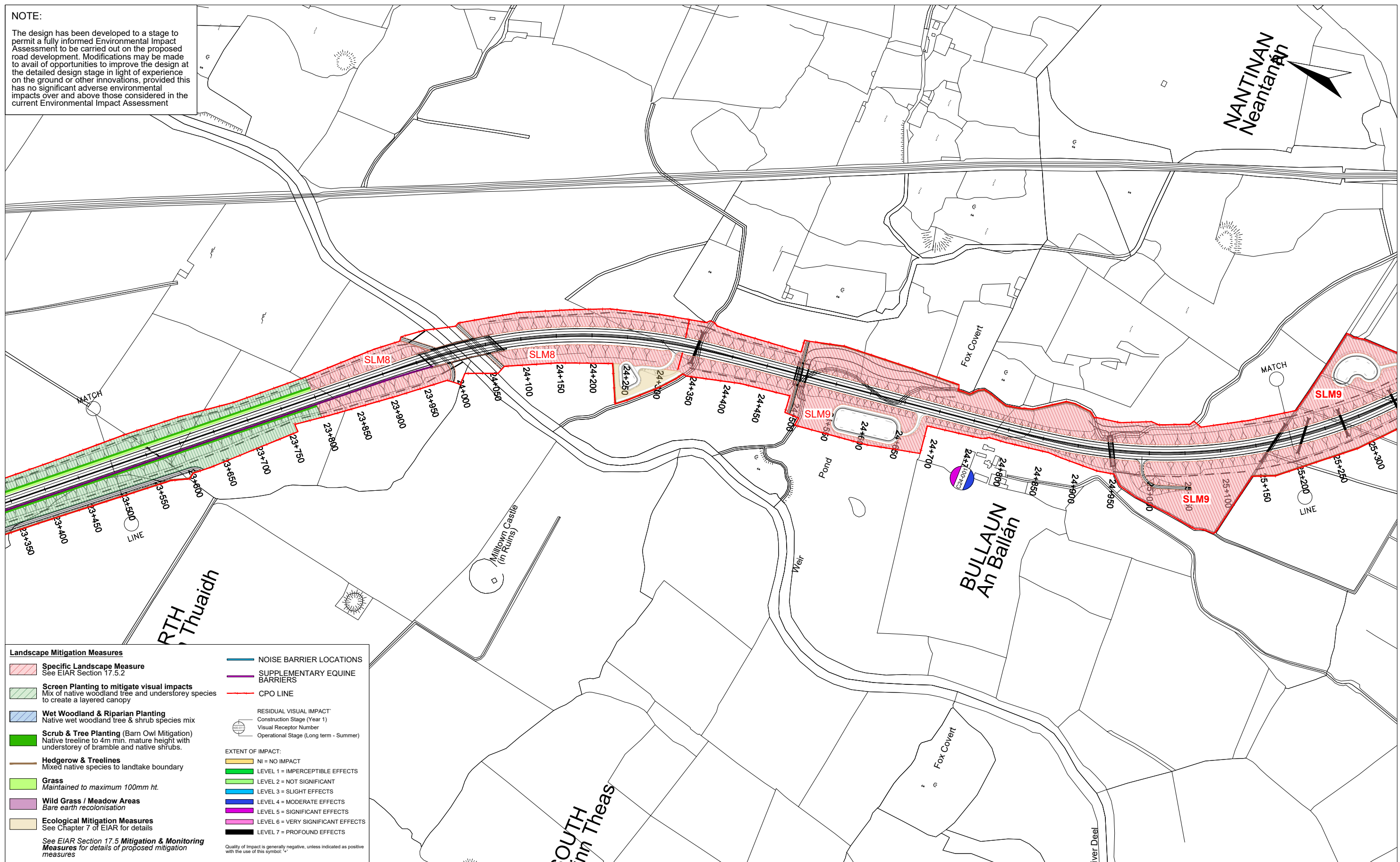
Drawing Title: <b>THE LANDSCAPE - IMPACT RATINGS AND MITIGATION SECTION C SHEET 2 OF 6</b>			
Designed: PM/GR	File:	Status: E.I.A.R.	
Drawn: LA	Job No: 14.131		
Checked: GR	Scale: 1:5000 (@ A3)	Drawing No: Fig 11.8	Rev: -
Approved: SMG	Date: December 2019		

DO NOT SCALE USE FIGURED DIMENSIONS ONLY



**NOTE:**

The design has been developed to a stage to permit a fully informed Environmental Impact Assessment to be carried out on the proposed road development. Modifications may be made to avail of opportunities to improve the design at the detailed design stage in light of experience on the ground or other innovations, provided this has no significant adverse environmental impacts over and above those considered in the current Environmental Impact Assessment



**Landscape Mitigation Measures**

- Specific Landscape Measure**  
See E.I.A.R Section 17.5.2
- Screen Planting to mitigate visual impacts**  
Mix of native woodland tree and understorey species to create a layered canopy
- Wet Woodland & Riparian Planting**  
Native wet woodland tree & shrub species mix
- Scrub & Tree Planting (Barn Owl Mitigation)**  
Native treeline to 4m min. mature height with understorey of bramble and native shrubs.
- Hedgerow & Treelines**  
Mixed native species to landtake boundary
- Grass**  
Maintained to maximum 100mm ht.
- Wild Grass / Meadow Areas**  
Bare earth recolonisation
- Ecological Mitigation Measures**  
See Chapter 7 of E.I.A.R for details

See E.I.A.R Section 17.5 Mitigation & Monitoring Measures for details of proposed mitigation measures

**NOISE BARRIER LOCATIONS**

**SUPPLEMENTARY EQUINE BARRIERS**

**CPO LINE**

**RESIDUAL VISUAL IMPACT**  
Construction Stage (Year 1)  
Visual Receptor Number  
Operational Stage (Long term - Summer)

**EXTENT OF IMPACT:**

- NI = NO IMPACT
- LEVEL 1 = IMPERCEPTIBLE EFFECTS
- LEVEL 2 = NOT SIGNIFICANT
- LEVEL 3 = SLIGHT EFFECTS
- LEVEL 4 = MODERATE EFFECTS
- LEVEL 5 = SIGNIFICANT EFFECTS
- LEVEL 6 = VERY SIGNIFICANT EFFECTS
- LEVEL 7 = PROFOUND EFFECTS

Quality of Impact is generally negative, unless indicated as positive with the use of this symbol: +

Ordnance Survey Ireland Licence No Licence No. 2019/09/CCMA/Limerick City & County Council.  
© Ordnance Survey Ireland and Government of Ireland.

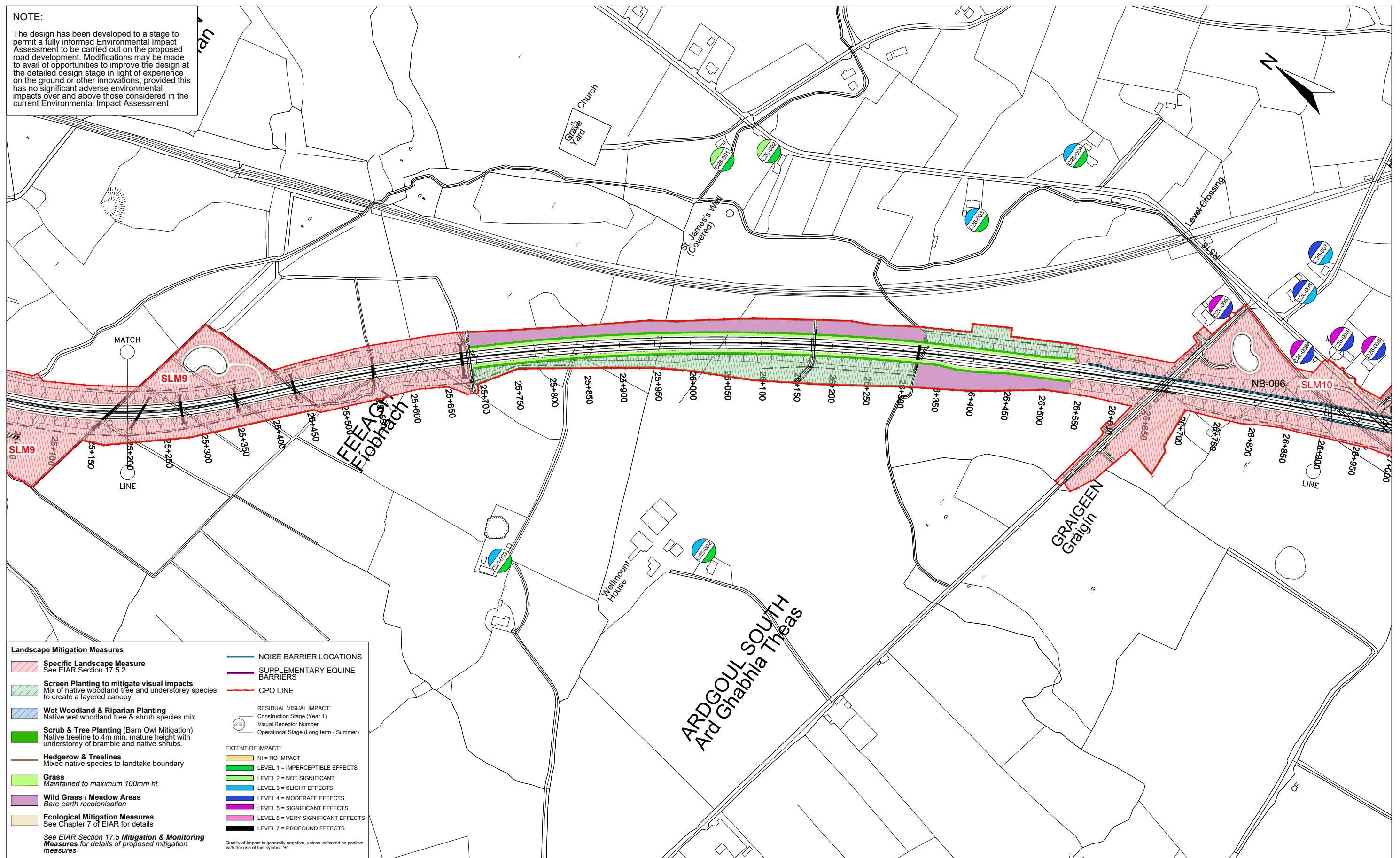
	<p><b>Roughan &amp; O'Donovan-AECOM Alliance</b></p> <p>Arena House, Arena Road, Sandyford, Dublin 18. Tel : +353 (1) 2940800 Fax : +353 (1) 2940820 e-mail : info@rod.ie Website : www.rod.ie www.aecom.com</p>	<p>Project</p> <p><b>Foynes to Limerick Road (including Adare Bypass)</b></p> <p><b>Environmental Impact Assessment Report</b></p>	<p>Drawing Title:</p> <p><b>THE LANDSCAPE - IMPACT RATINGS AND MITIGATION SECTION C SHEET 3 OF 6</b></p>										
			<table border="1"> <tr> <td>Designed: PM/GR</td> <td>File:</td> <td>Status: E.I.A.R.</td> </tr> <tr> <td>Drawn: LA</td> <td>Job No: 14.131</td> <td></td> </tr> <tr> <td>Checked: GR</td> <td>Scale: 1:5000 (@ A3)</td> <td>Drawing No: Fig 11.9</td> </tr> <tr> <td>Approved: SMG</td> <td>Date: December 2019</td> <td>Rev: -</td> </tr> </table>	Designed: PM/GR	File:	Status: E.I.A.R.	Drawn: LA	Job No: 14.131		Checked: GR	Scale: 1:5000 (@ A3)	Drawing No: Fig 11.9	Approved: SMG
Designed: PM/GR	File:	Status: E.I.A.R.											
Drawn: LA	Job No: 14.131												
Checked: GR	Scale: 1:5000 (@ A3)	Drawing No: Fig 11.9											
Approved: SMG	Date: December 2019	Rev: -											

DO NOT SCALE USE FIGURED DIMENSIONS ONLY



**NOTE:**

The design has been developed to a stage to permit a fully informed Environmental Impact Assessment to be carried out on the proposed road development. Modifications may be made to avail of opportunities to improve the design at the detailed design stage in light of experience on the ground or other innovations, provided this has no significant adverse environmental impacts over and above those considered in the current Environmental Impact Assessment



**Landscape Mitigation Measures**

- Specific Landscape Measure**  
See E.I.A.R Section 17.5.2
- Screen Planting to mitigate visual impacts**  
Mix of native woodland tree and understorey species to create a layered canopy
- Wet Woodland & Riparian Planting**  
Native wet woodland tree & shrub species mix
- Scrub & Tree Planting (Barn Owl Mitigation)**  
Native treeline to 4m min. mature height with understorey of bramble and native shrubs.
- Hedgerow & Treelines**  
Mixed native species to landtake boundary
- Grass**  
Maintained to maximum 100mm ht.
- Wild Grass / Meadow Areas**  
Bare earth recolonisation
- Ecological Mitigation Measures**  
See Chapter 7 of E.I.A.R for details

See E.I.A.R Section 17.5 Mitigation & Monitoring Measures for details of proposed mitigation measures

**NOISE BARRIER LOCATIONS**

**SUPPLEMENTARY EQUINE BARRIERS**

**CPO LINE**

**RESIDUAL VISUAL IMPACT**  
Construction Stage (Year 1)  
Visual Receptor Number  
Operational Stage (Long term - Summer)

**EXTENT OF IMPACT:**

- NI = NO IMPACT
- LEVEL 1 = IMPERCEPTIBLE EFFECTS
- LEVEL 2 = NOT SIGNIFICANT
- LEVEL 3 = SLIGHT EFFECTS
- LEVEL 4 = MODERATE EFFECTS
- LEVEL 5 = SIGNIFICANT EFFECTS
- LEVEL 6 = VERY SIGNIFICANT EFFECTS
- LEVEL 7 = PROFOUND EFFECTS

Quality of Impact is generally negative, unless indicated as positive with the use of this symbol: +

Ordnance Survey Ireland Licence No Licence No. 2019/09/CCMA/Limerick City & County Council  
© Ordnance Survey Ireland and Government of Ireland.

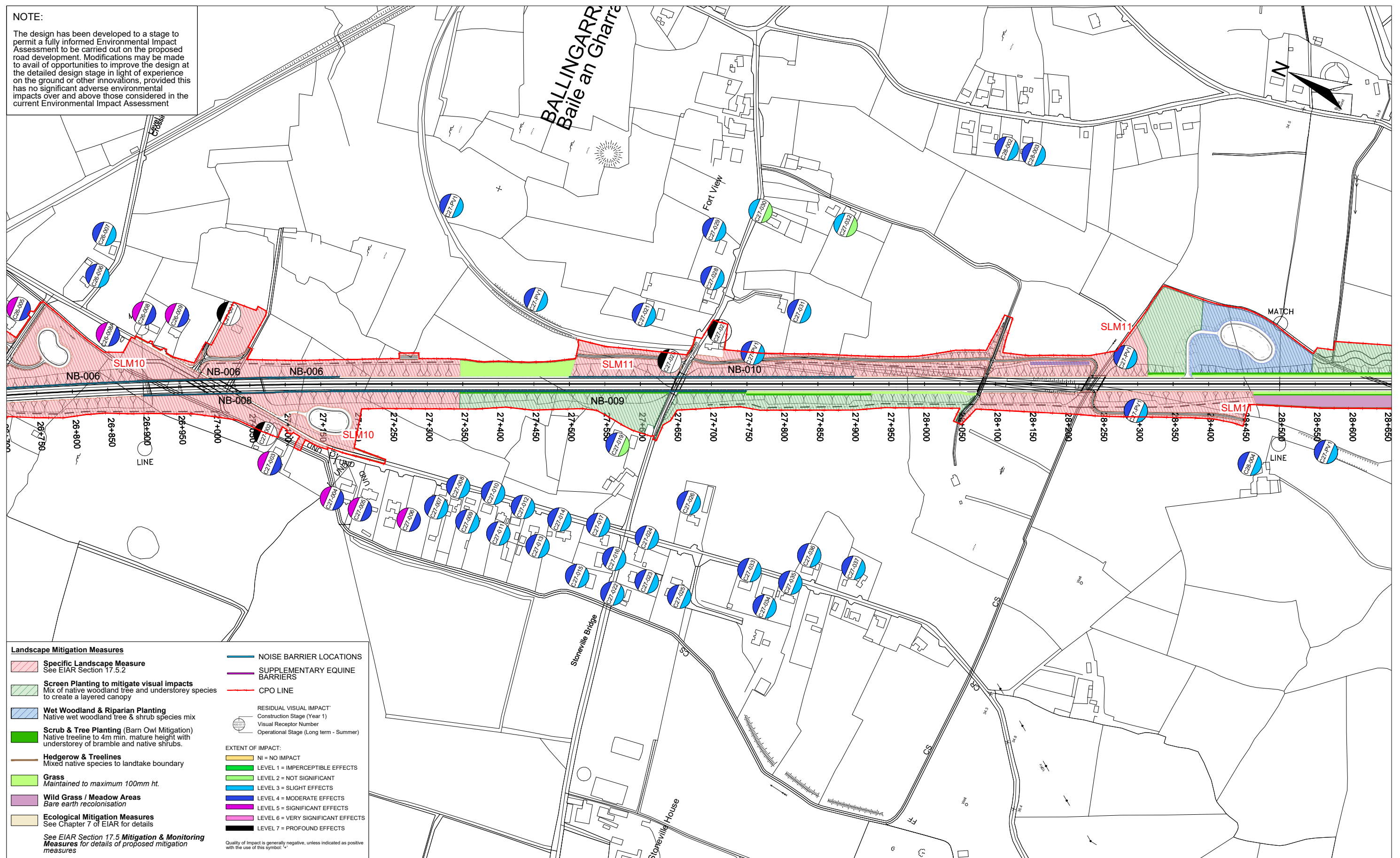
	<p><b>Roughan &amp; O'Donovan-AECOM Alliance</b></p> <p>Arena House, Arena Road, Sandyford, Dublin 18. Tel : +353 (1) 2940800 Fax : +353 (1) 2940820 e-mail : info@rod.ie Website : www.rod.ie www.aecom.com</p>	<p>Project</p> <p><b>Foynes to Limerick Road (including Adare Bypass)</b></p> <p><b>Environmental Impact Assessment Report</b></p>	<p>Drawing Title:</p> <p><b>THE LANDSCAPE - IMPACT RATINGS AND MITIGATION SECTION C SHEET 4 OF 6</b></p>										
			<table border="1"> <tr> <td>Designed: PM/GR</td> <td>File:</td> <td>Status: E.I.A.R.</td> </tr> <tr> <td>Drawn: LA</td> <td>Job No: 14.131</td> <td></td> </tr> <tr> <td>Checked: GR</td> <td>Scale: 1:5000 (@ A3)</td> <td>Drawing No: Fig 11.10</td> </tr> <tr> <td>Approved: SMG</td> <td>Date: December 2019</td> <td>Rev: -</td> </tr> </table>	Designed: PM/GR	File:	Status: E.I.A.R.	Drawn: LA	Job No: 14.131		Checked: GR	Scale: 1:5000 (@ A3)	Drawing No: Fig 11.10	Approved: SMG
Designed: PM/GR	File:	Status: E.I.A.R.											
Drawn: LA	Job No: 14.131												
Checked: GR	Scale: 1:5000 (@ A3)	Drawing No: Fig 11.10											
Approved: SMG	Date: December 2019	Rev: -											

DO NOT SCALE USE FIGURED DIMENSIONS ONLY



**NOTE:**

The design has been developed to a stage to permit a fully informed Environmental Impact Assessment to be carried out on the proposed road development. Modifications may be made to avail of opportunities to improve the design at the detailed design stage in light of experience on the ground or other innovations, provided this has no significant adverse environmental impacts over and above those considered in the current Environmental Impact Assessment



**Landscape Mitigation Measures**

- Specific Landscape Measure**  
See E.I.A.R Section 17.5.2
- Screen Planting to mitigate visual impacts**  
Mix of native woodland tree and understorey species to create a layered canopy
- Wet Woodland & Riparian Planting**  
Native wet woodland tree & shrub species mix
- Scrub & Tree Planting (Barn Owl Mitigation)**  
Native treeline to 4m min. mature height with understorey of bramble and native shrubs.
- Hedgerow & Treelines**  
Mixed native species to landtake boundary
- Grass**  
Maintained to maximum 100mm ht.
- Wild Grass / Meadow Areas**  
Bare earth recolonisation
- Ecological Mitigation Measures**  
See Chapter 7 of E.I.A.R for details

See E.I.A.R Section 17.5 Mitigation & Monitoring Measures for details of proposed mitigation measures

**NOISE BARRIER LOCATIONS**

**SUPPLEMENTARY EQUINE BARRIERS**

**CPO LINE**

**RESIDUAL VISUAL IMPACT**  
Construction Stage (Year 1)  
Visual Receptor Number  
Operational Stage (Long term - Summer)

**EXTENT OF IMPACT:**

- NI = NO IMPACT
- LEVEL 1 = IMPERCEPTIBLE EFFECTS
- LEVEL 2 = NOT SIGNIFICANT
- LEVEL 3 = SLIGHT EFFECTS
- LEVEL 4 = MODERATE EFFECTS
- LEVEL 5 = SIGNIFICANT EFFECTS
- LEVEL 6 = VERY SIGNIFICANT EFFECTS
- LEVEL 7 = PROFOUND EFFECTS

Quality of Impact is generally negative, unless indicated as positive with the use of this symbol: +

Ordnance Survey Ireland Licence No Licence No. 2019/09/CCMA/Limerick City & County Council  
© Ordnance Survey Ireland and Government of Ireland.



**Roughan & O'Donovan-AECOM Alliance**

**PRODAECOM**

Arena House, Arena Road,  
Sandyford, Dublin 18.  
Tel : +353 (1) 2940800  
Fax : +353 (1) 2940820  
e-mail : info@rod.ie  
Website : www.rod.ie  
www.aecom.com

Project

**Foynes to Limerick Road (including Adare Bypass)**

**Environmental Impact Assessment Report**

Drawing Title:  
**THE LANDSCAPE - IMPACT RATINGS AND MITIGATION SECTION C SHEET 5 OF 6**

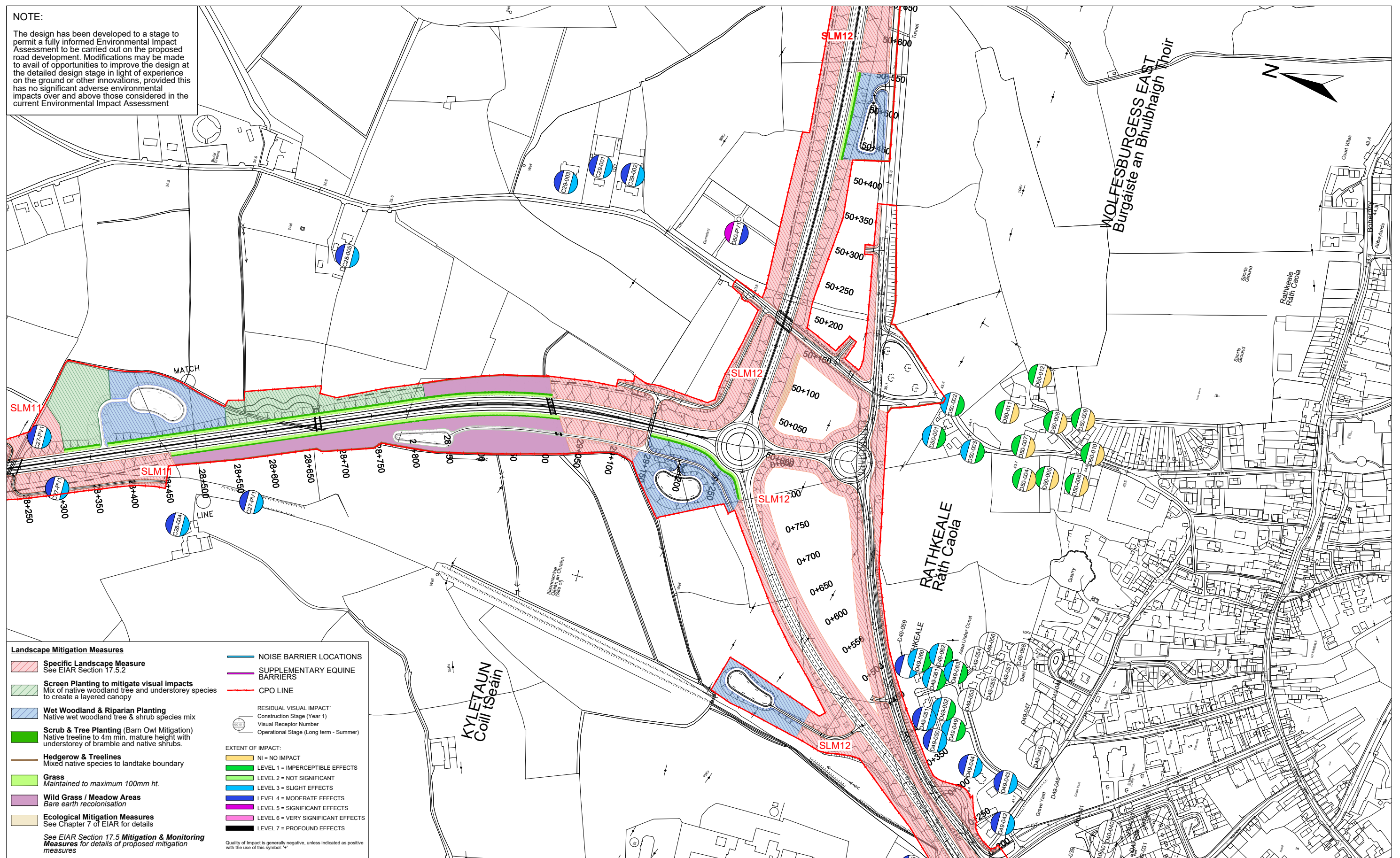
Designed: PM/GR	File:	Status: E.I.A.R.
Drawn: LA	Job No: 14.131	
Checked: GR	Scale: 1:5000 (@ A3)	Drawing No: Fig 11.11
Approved: SMG	Date: December 2019	Rev: -

DO NOT SCALE USE FIGURED DIMENSIONS ONLY



**NOTE:**

The design has been developed to a stage to permit a fully informed Environmental Impact Assessment to be carried out on the proposed road development. Modifications may be made to avail of opportunities to improve the design at the detailed design stage in light of experience on the ground or other innovations, provided this has no significant adverse environmental impacts over and above those considered in the current Environmental Impact Assessment



**Landscape Mitigation Measures**

- Specific Landscape Measure**  
See EIAR Section 17.5.2
  - Screen Planting to mitigate visual impacts**  
Mix of native woodland tree and understorey species to create a layered canopy
  - Wet Woodland & Riparian Planting**  
Native wet woodland tree & shrub species mix
  - Scrub & Tree Planting (Barn Owl Mitigation)**  
Native treeline to 4m min. mature height with understorey of bramble and native shrubs.
  - Hedgerow & Treelines**  
Mixed native species to landtake boundary
  - Grass**  
Maintained to maximum 100mm ht.
  - Wild Grass / Meadow Areas**  
Bare earth recolonisation
  - Ecological Mitigation Measures**  
See Chapter 7 of EIAR for details
- See EIAR Section 17.5 Mitigation & Monitoring Measures for details of proposed mitigation measures
- NOISE BARRIER LOCATIONS**
  - SUPPLEMENTARY EQUINE BARRIERS**
  - CPO LINE**
- RESIDUAL VISUAL IMPACT**  
Construction Stage (Year 1)  
Visual Receptor Number  
Operational Stage (Long term - Summer)
- EXTENT OF IMPACT:**
- NI = NO IMPACT
  - LEVEL 1 = IMPERCEPTIBLE EFFECTS
  - LEVEL 2 = NOT SIGNIFICANT
  - LEVEL 3 = SLIGHT EFFECTS
  - LEVEL 4 = MODERATE EFFECTS
  - LEVEL 5 = SIGNIFICANT EFFECTS
  - LEVEL 6 = VERY SIGNIFICANT EFFECTS
  - LEVEL 7 = PROFOUND EFFECTS
- Quality of Impact is generally negative, unless indicated as positive with the use of this symbol: +

Ordnance Survey Ireland Licence No Licence No. 2019/09/CCMA/Limerick City & County Council  
© Ordnance Survey Ireland and Government of Ireland.

							<p>THE LANDSCAPE - IMPACT RATINGS AND MITIGATION SECTION C SHEET 6 OF 6</p>		
				<p>Arena House, Arena Road, Sandyford, Dublin 18. Tel : +353 (1) 2940800 Fax : +353 (1) 2940820 e-mail : info@rod.ie Website : www.rod.ie www.aecom.com</p>	<p>Project Title: <b>Foynes to Limerick Road (including Adare Bypass)</b></p> <p>Environmental Impact Assessment Report</p>		<p>Designed: PM/GR Drawn: LA Checked: GR Approved: SMG</p>	<p>File: Job No: 14.131 Scale: 1:5000 (@ A3) Date: December 2019</p>	<p>Status: E.I.A.R. Drawing No: Fig 11.12 Rev: -</p>

DO NOT SCALE USE FIGURED DIMENSIONS ONLY